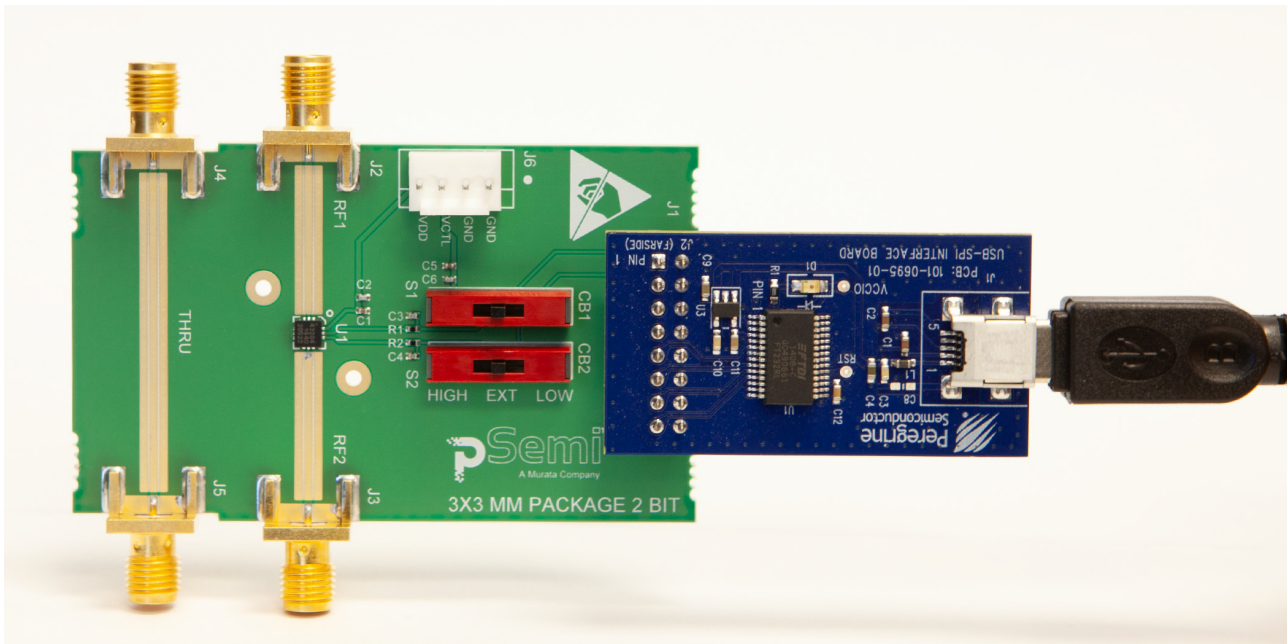


PE43620 Evaluation Kit (EVK) User's Manual

Evaluation Kit (EVK) User's Manual, 2-bit, 18 dB, 50 MHz–3 GHz



Copyright and Trademarks

©2019, pSemi Corporation. All rights reserved. The Peregrine Semiconductor name, Peregrine Semiconductor logo and UltraCMOS are registered trademarks and the pSemi name, pSemi logo, HaRP and DuNE are trademarks of pSemi Corporation in the U.S. and other countries.

Disclaimers

The information in this document is believed to be reliable. However, pSemi assumes no liability for the use of this information. Use shall be entirely at the user's own risk. No patent rights or licenses to any circuits described in this document are implied or granted to any third party. pSemi's products are not designed or intended for use in devices or systems intended for surgical implant, or in other applications intended to support or sustain life, or in any application in which the failure of the pSemi product could create a situation in which personal injury or death might occur. pSemi assumes no liability for damages, including consequential or incidental damages, arising out of the use of its products in such applications.

Patent Statement

pSemi products are protected under one or more of the following U.S. patents: patents.psemi.com

Sales Contact

For additional information, contact Sales at sales@psemi.com.

Corporate Headquarters

9369 Carroll Park Drive, San Diego, CA, 92121
858-731-9400

Table of Contents

Introduction	1
Application Support	1
Evaluation Kit Contents and Requirements	1
Kit Contents	1
PC Requirements	2
Instrumentation Requirements	2
Evaluation Board Assembly	3
Evaluation Board Assembly Overview	3
Peregrine USB Interface Board	4
Quick Start Guide	5
Quick Start Overview	5
Software Installation	5
USB Interface Driver	5
EVK Software	5
Evaluation Solution Assembly	8
Connection of the USB Interface Board to the Evaluation Board	8
Hardware Configuration	9
Evaluation Board Schematic	9
Functional Overview	10
Evaluation Board	10
Hardware Operation	11
Graphical User Interface	12
Graphical User Interface Controls	13
Part Number Selection	13
Device Information	13
Parallel Mode	13

Continuous Pattern Loop	14
Attenuation Value	14
Attenuation Slide Bar	14
Technical Resources - - - - -	17
Technical Resources - - - - -	17

Introduction



The PE43620 is a 50Ω, high linearity, 2-bit RF digital step attenuator (DSA) that supports a frequency range from 50 MHz to 3 GHz. The PE43620 provides an integrated digital control interface that supports parallel programming of the attenuation.

The PE43620 covers an 18 dB attenuation range in 6 dB steps. In addition, no external blocking capacitors are required if 0 VDC is present on the RF ports.

The PE43620 evaluation kit (EVK) includes the application software and hardware required to control and evaluate the functionality of the DSA using a PC running the Windows® operating system to control the USB interface board.

Application Support

For any technical inquiries regarding the evaluation kit or software, please visit applications support at www.psemi.com (fastest response) or call (858) 731-9400.

Evaluation Kit Contents and Requirements

Kit Contents

The PE43620 DSA EVK includes the following hardware required to evaluate the device:

Table 1 ▪ PE43620 Evaluation Kit Contents

Quantity	Part Number	Description
1	PRT-72717	PE43620 DSA Evaluation Board Assembly
1	PRT-69137	Kit, USB Interface Board (Blue), 8 bit, 2.5V IO, with 3-foot cable

PC Requirements

The PE43620 DSA Evaluation Software requires a computer with the following minimum requirements:

- PC with Windows XP, Vista, 7, 8 or 10
- Mouse or other pointing device
- USB port
- Web browser with Internet access (for downloading software)
- User account with administrator privileges (for installing software)

Instrumentation Requirements

In order to evaluate the step attenuator performance of the evaluation board, the following equipment is required:

- Power supply
 - 3.3 VDC with 0.5A minimum
 - DC cables (Banana to Mini-Grabber suggested)
- Vector network analyzer
 - SMA RF cables

Caution: The PE43620 DSA EVK contains components that may be damaged by exposure to voltages in excess of the specified voltage, including voltages produced by electrostatic discharges. Use care when handling the board. Always handle in accordance with procedures for handling static-sensitive components. Avoid applying excess voltages to or touching the power supply terminals, RF ports or digital inputs.

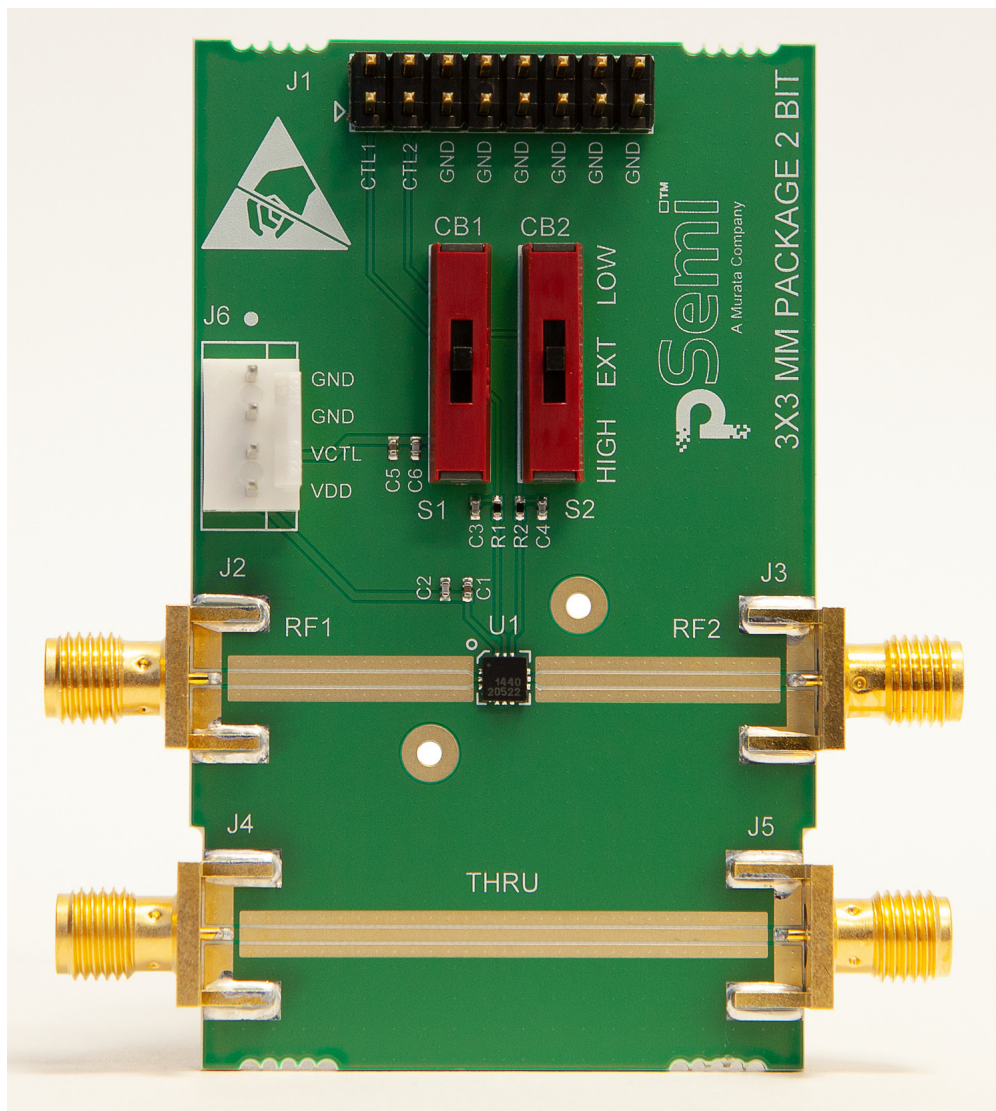
Evaluation Board Assembly



Evaluation Board Assembly Overview

The evaluation board is assembled with a PE43620 DSA, several headers, and SMA RF connectors.

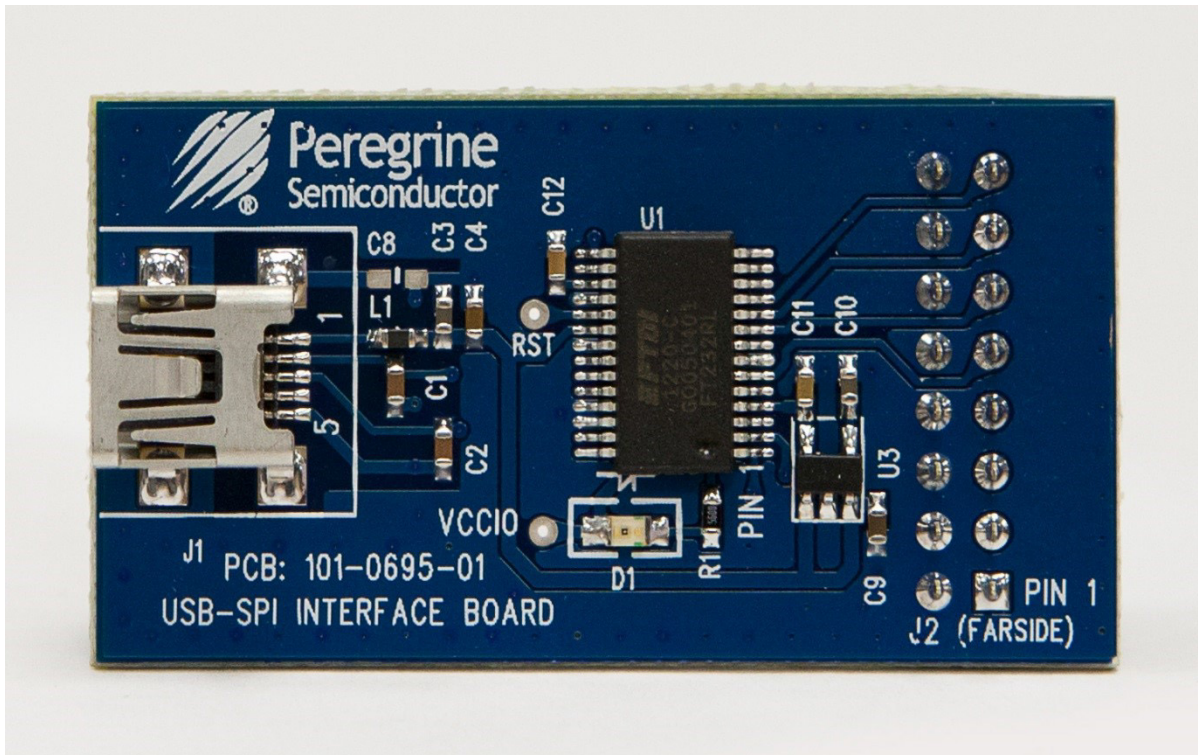
Figure 1 ■ PE43620 Evaluation Board Assembly



Peregrine USB Interface Board

The USB interface board (Figure 2) is included in the evaluation kit. This board allows the user to control the digital input signals at the PE43620 device by using pSemi software running the Windows operating system. To install the driver software, see “Software Installation” on page 5.

Figure 2 ▪ Peregrine USB Interface Board



Quick Start Guide



Quick Start Overview

The EVB assembly was designed to ease customer evaluation of the PE43620 digital step attenuator. This section will guide the user through the software installation, the hardware configuration, and the features of the graphical user interface (GUI).

Software Installation

USB Interface Driver

The latest USB interface board drivers are available via Microsoft Windows® Update. Internet connectivity is required to download the drivers. Connect the USB interface board to the PC and select the Windows Update option to obtain and install the drivers (Figure 3).

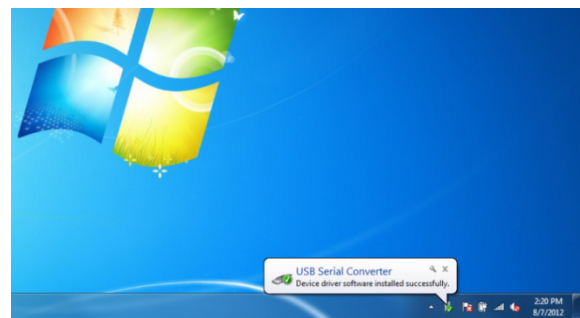
In the case where Windows Update is not available; the USB interface board driver may be downloaded directly from the manufacturer at the following URL:

www.ftdichip.com/Drivers/D2XX.htm

Select the link for the appropriate Windows operating system driver. It is recommended to select the “Setup Executable” option when choosing the driver to download.

A USB interface board (Figure 2) is included with the evaluation kit, and driver installation completed prior to attempting communicating with the PE43620 DSA evaluation board.

Figure 3 ■ USB Driver Installation (Detecting)



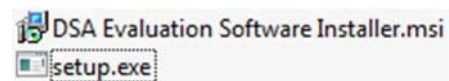
EVK Software

To evaluate the PE43620 EVK performance, the application software must be installed on your computer. The USB interface and PE43620 DSA Evaluation software is compatible with computers running Windows XP, Windows Vista, Windows 7, Windows 8, or Windows 10 in 32- or 64-bit configurations. This software is available for download as a .zip file directly from the pSemi website at the following URL:

<http://www.psemi.com/products/digital-step-attenuators-dsa>

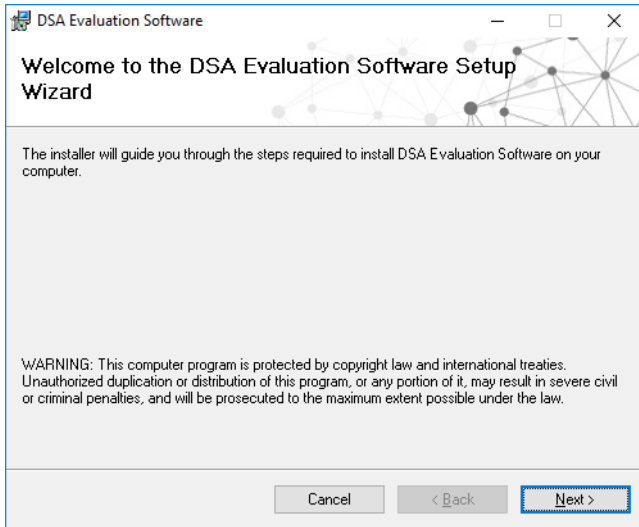
To install the PE43620 DSA Evaluation Software, unzip the archive to a named folder of your choice and execute the installer application “setup.exe” (Figure 4).

Figure 4 ■ DSA Evaluation Software Setup.exe File



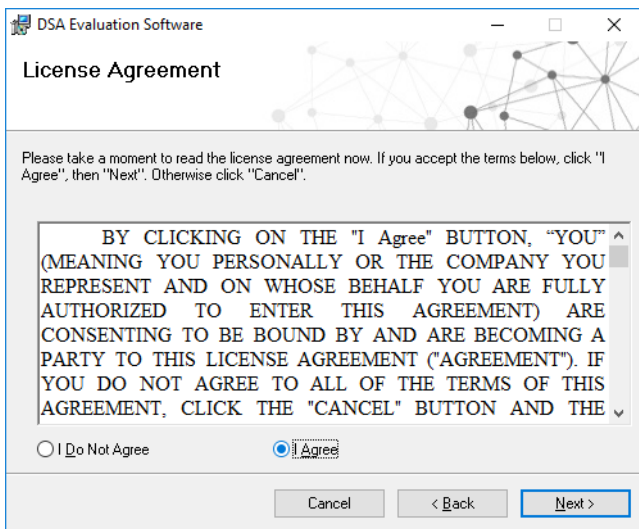
After the setup.exe file has been executed, a welcome screen appears. It is strongly recommended that all programs be closed prior to continuing. Click the “Next” button to proceed (Figure 5).

Figure 5 ■ DSA Evaluation Software Setup



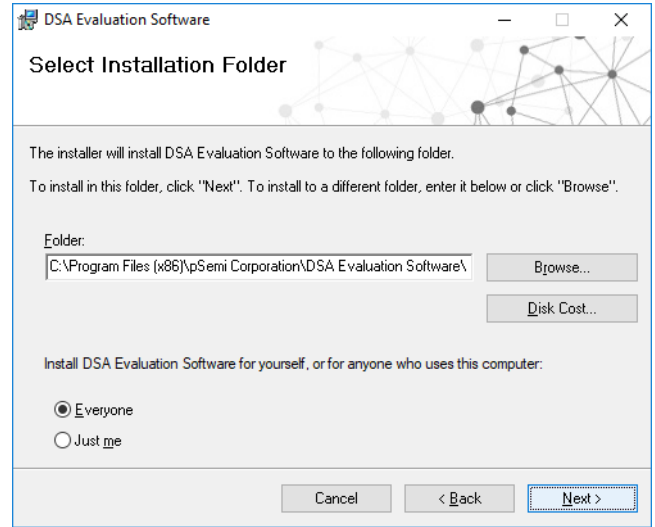
Review the license agreement, select “I agree,” and then click “Next.” (Figure 6).

Figure 6 ■ License Agreement



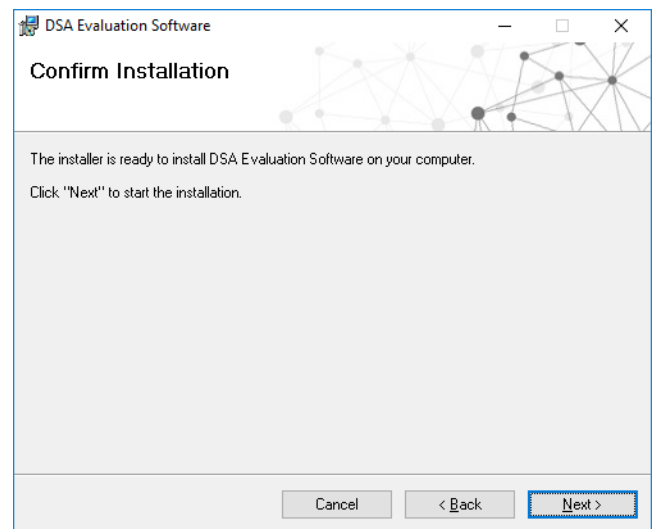
Select the desired location for the installation directory. It is recommended to accept the default location.

Figure 7 ■ Default Installation Location



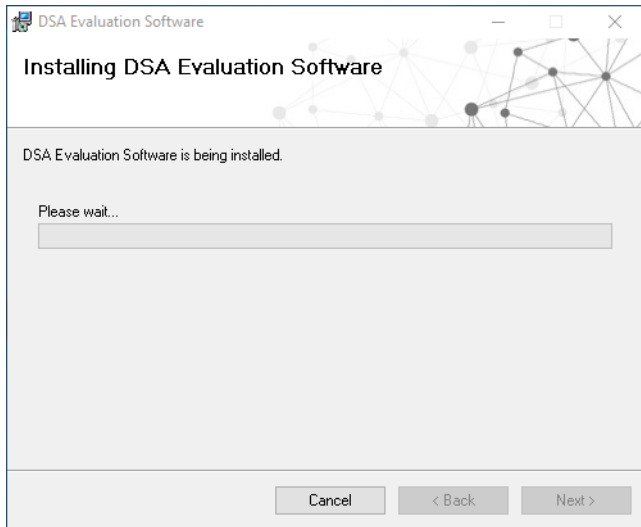
The next window allows the user to confirm the installation choices before beginning the installation process. Click “Next” to proceed with the software installation (Figure 8). Please note that the installation of software requires Administrator privileges under the Windows operating system.

Figure 8 ■ Confirm Installation



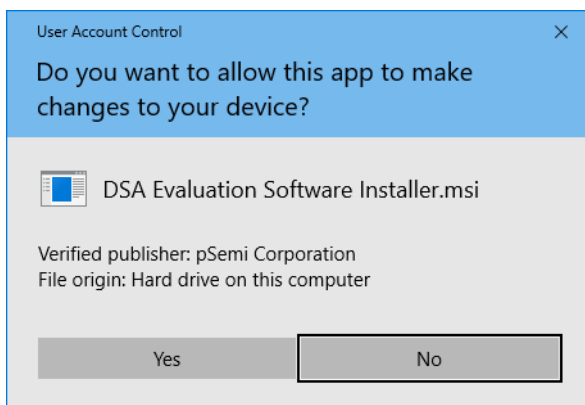
As the software files are installed, an indicator displays the progress. On slower computers, installation of the software may take a few minutes (Figure 9).

Figure 9 ■ Installation Progress Display



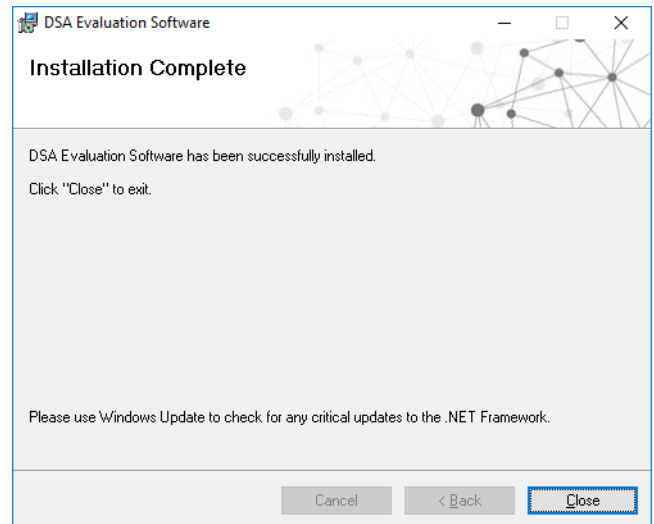
You may be prompted to confirm the installation of the application. Confirm that the “Verified publisher” is “pSemi Corporation” before proceeding (Figure 10).

Figure 10 ■ User Access Control Confirmation Dialog



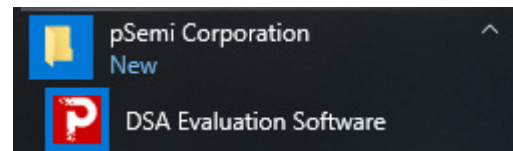
Upon successful installation, a confirmation message is displayed. Click “Close” to exit (Figure 11).

Figure 11 ■ Installation Complete



A new folder named “pSemi Corporation” appears in the start menu of your computer. Select “DSA Evaluation Software” to launch the evaluation software (Figure 12).

Figure 12 ■ DSA Evaluation Software Start Menu Item



Evaluation Solution Assembly

Connection of the USB Interface Board to the Evaluation Board

The evaluation board and the USB interface board contain a 16-pin header. This feature allows the USB interface board (socket) to connect directly to the evaluation board (pin) on the front-side as shown in **Figure 13**. Use caution when connecting the USB Interface board to ensure that the two rows of pins are connected without shifting in any direction.

Figure 13 ■ PE43620 USB Interface Board Connected to the Evaluation Board for Parallel Programming—Front View

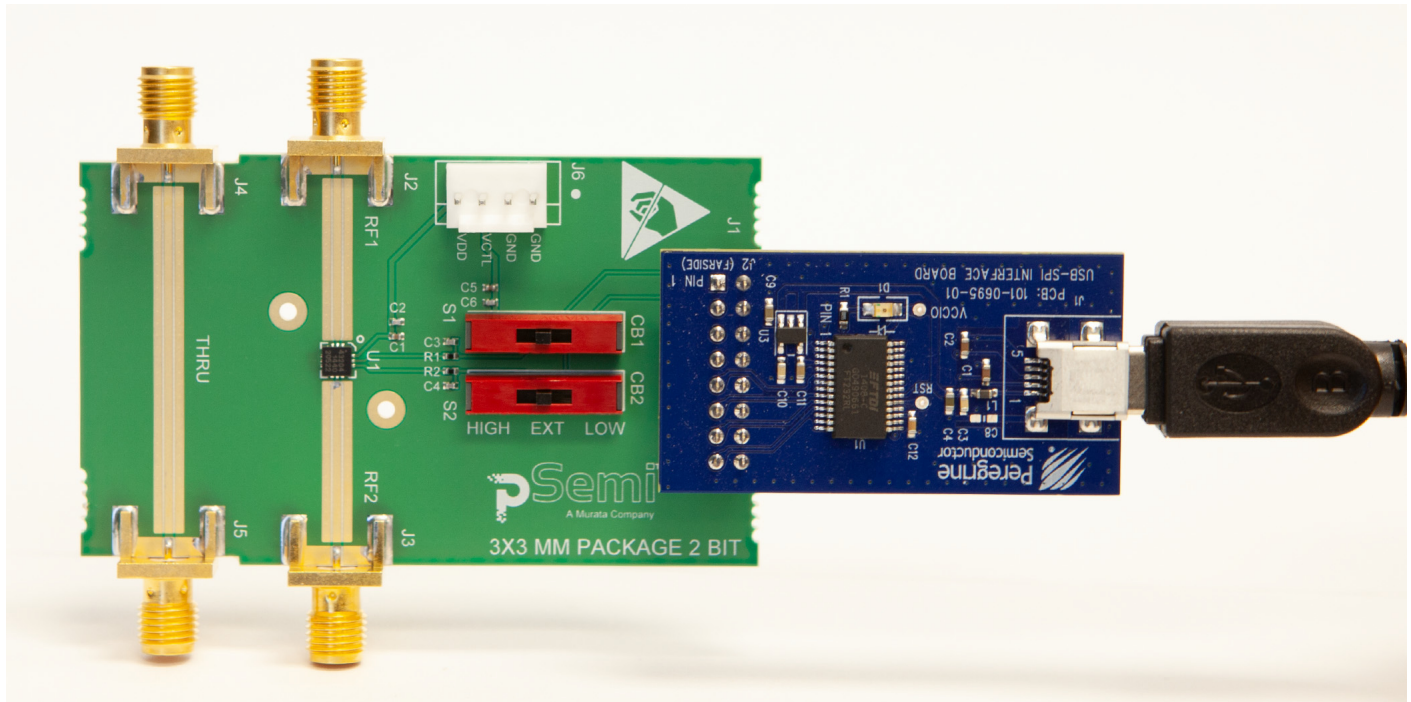
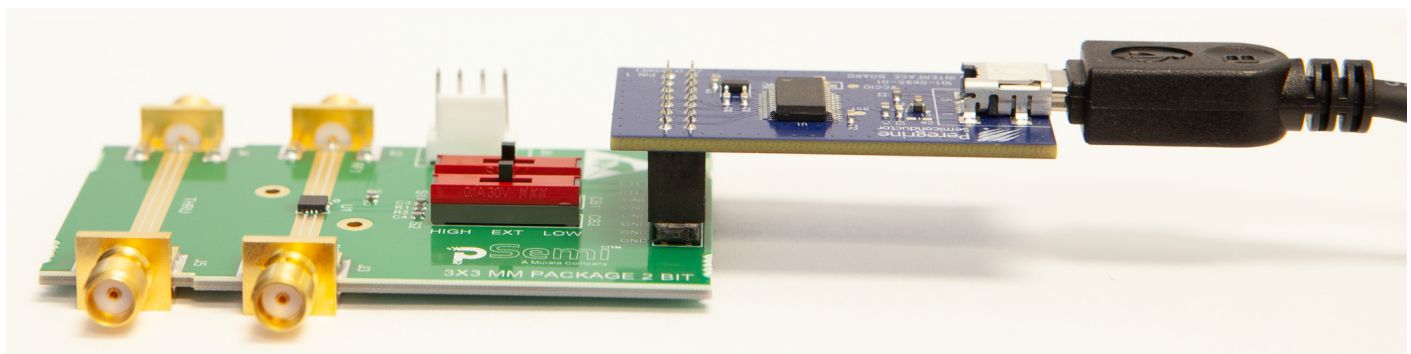


Figure 14 ■ PE43620 USB Interface Board Connected to the Evaluation Board for Parallel Programming—Side View



Hardware Configuration

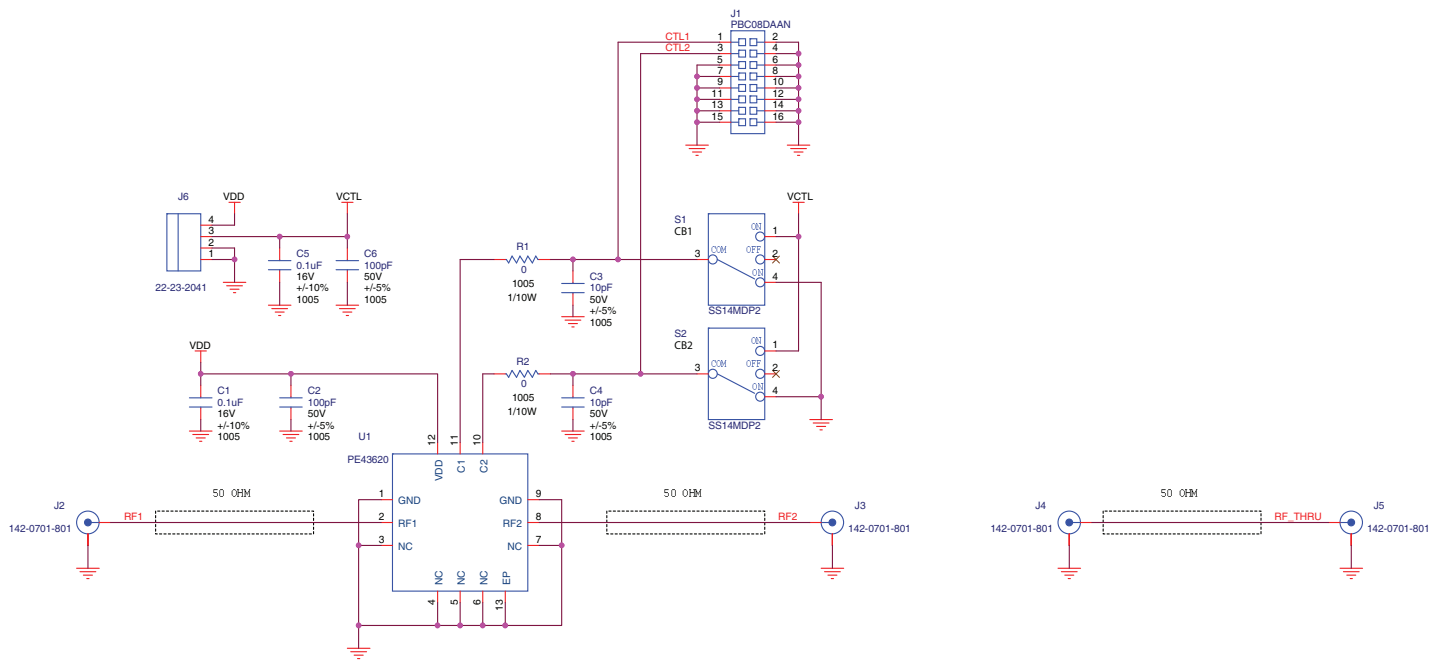
The evaluation board is designed to ease customer evaluation of pSemi's products. The board contains:

- Digital signal connectors that are connected for power supply, digital control signals and USB interface board.
- SMA connectors that are provided for RF performance verification and THRU trace to calibrate board trace loss.

Evaluation Board Schematic

The schematic of the evaluation board is provided in the following section:

Figure 15 ■ PE43620 DSA Evaluation Board Schematic



3. CAPACITANCE VALUES ARE IN MICROFARDS

2. RESISTANCE VALUES ARE IN OHMS

1. CONTAINS PARTS AND ASSEMBLIES SUSCEPTIBLE TO DAMAGE BY ELECTROSTATIC DISCHARGE (ESD)



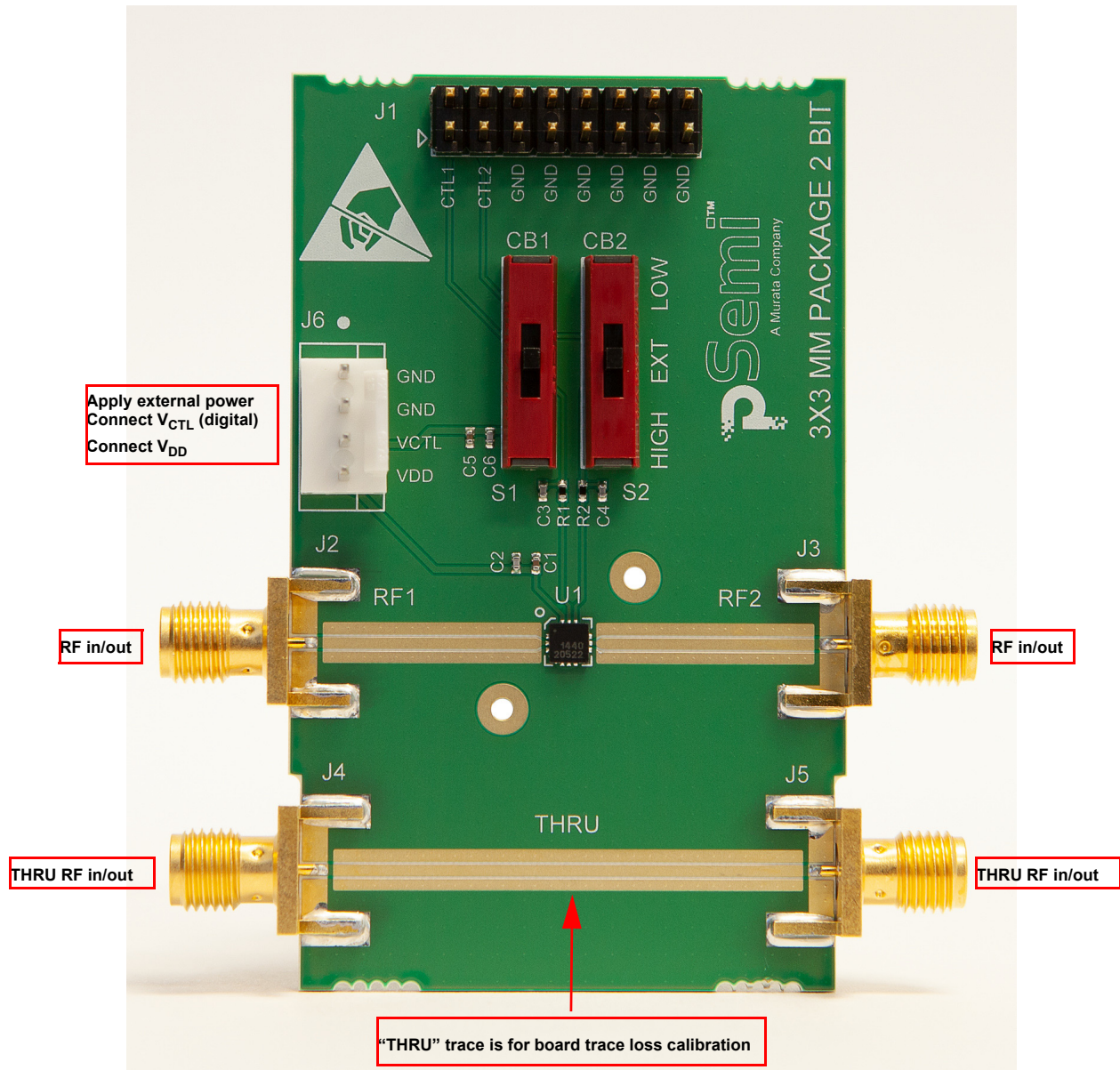
UNLESS OTHERWISE SPECIFIED:
DIMENSIONS: (x) mm/(y) inches
TOLERANCES ARE:
X.X = ±0.11
X.XX = ±0.025
X.XXX = ±0.0127(0.005)
X.XXXX = ±0.0076(0.0003)

Functional Overview

Evaluation Board

Figure 16 illustrates the connections on the RF evaluation board used in evaluating the PE43620 DSA.

Figure 16 ■ PE43620 DSA Evaluation Board Functional Overview



Hardware Operation

The following steps prepare the evaluation solution for power up and making measurements. Please follow the guidelines and verify the connections with the supplied schematic before applying power.

- 1) Verify all DC power supplies are turned off before proceeding.
- 2) Calibrate board trace loss with THRU trace test coupon between J4 and J5. THRU calibration is sufficient for initial measurements. Use one-half the loss of the measured trace, as this will de-embed one connector and half the trace. If more accurate results are desired, a full vector de-embedding can be done with the THRU trace that matches your de-embedding technique.
- 3) Provide external power supply for V_{DD} on J6. Pin 14, V_{DD} CTL on J6 pin 3, GND on J6 pins 1 and 2 (Table 2).
- 4) Move switches CB1 and CB2 to the center position "EXT" when using the PC software and USB interface board to control the DSA.
- 5) When controlling the DSA without the PC software and USB interface board, use switches CB1 and CB2 to positions HIGH and LOW to set the desired digital input.

Table 2 ■ Recommended Operating Condition for the PE43620

Parameter	Min	Typ	Max	Unit
Positive supply voltage, V_{DD}	3.0	3.3	3.6	V
Positive supply current, I_{DD}		8	200	μ A
Digital input high ⁽¹⁾	$0.7 \times V_{DD}$		3.60	V
Digital input low	0		$0.3 \times V_{DD}$	V
Digital input current		10	20	μ A
Notes:				
1) This voltage is named VCTL on EVK J6 pin 3 and is used to manually set a logic "1" when using S1 and S2 to force the logic levels.				

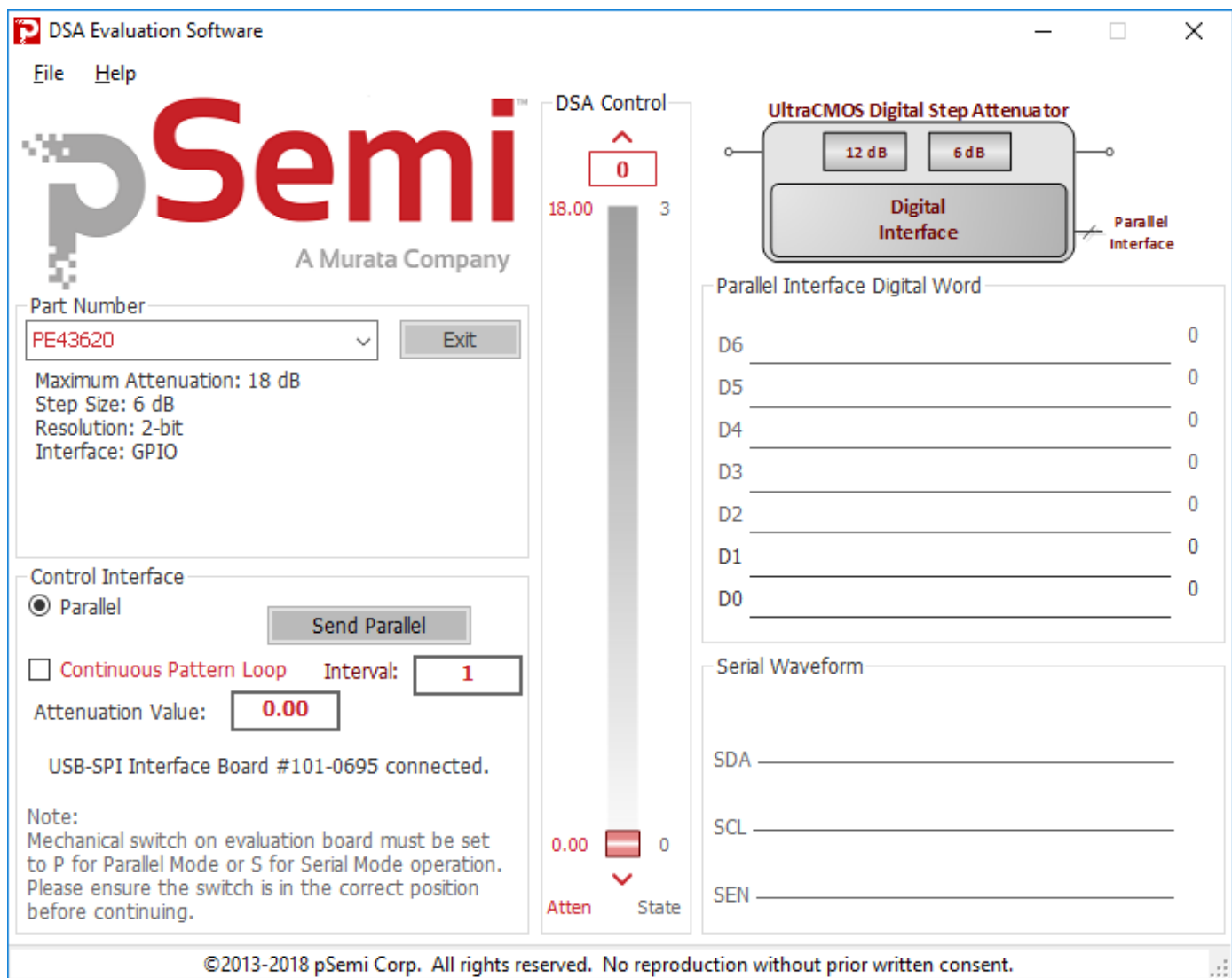
Graphical User Interface

Figure 17 displays the DSA application software graphical user interface (GUI), which has the USB interface board plugged into the computer. See “**Hardware Operation**” on page 11 for the EVK hardware configuration to enable use with the GUI control software.

If the USB interface board is not connected when the application software is launched, the message “No interface board connected. Please connect USB-SPI Interface #101-0695” appears at the bottom of the screen. The message “USB-SPI Interface Board 101-0695 connected” is displayed when the USB adapter is connected and recognized.

In the upper left corner, under the pSemi logo, use the drop down menu to select the part for evaluation. The part description appears in the box below the part number.

Figure 17 ■ PE43620 DSA Evaluation Software Graphical User Interface



Graphical User Interface Controls

Part Number Selection

The drop down control (**Figure 18**) allows the user to select the type of attenuator to control. To evaluate the PE43620, ensure PE43620 is selected. The device information section is updated when the selected device is changed.

Figure 18 ■ Graphical User Interface Part Number Selection



Device Information

The device information area displays some basic information about the device that has been selected. Information consists of interface type, maximum attenuation, number of digital bits, and attenuation step size.

Figure 19 ■ Graphical User Interface Device Information

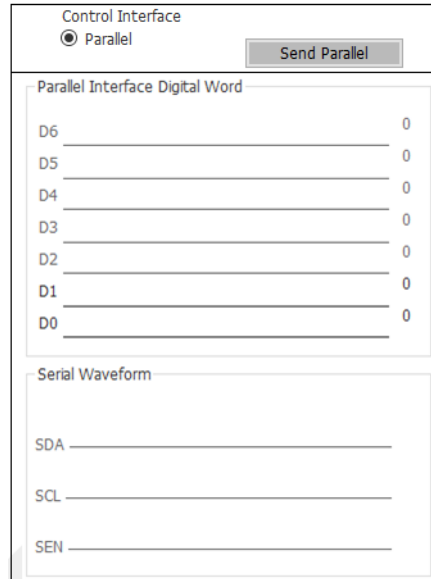
Maximum Attenuation: 18 dB
Step Size: 6 dB
Resolution: 2-bit
Interface: GPIO

Parallel Mode

The DSA application software for the PE43620 is configured to support parallel device programming by default and is the only available option. The interface will operate in strictly parallel mode for the PE43620.

The Send Latch button is provided to resend the programming bits to the device at the same attenuation state.

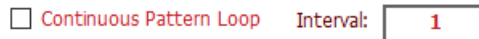
Figure 20 ■ Parallel Mode GUI Features



Continuous Pattern Loop

Click the Continuous Pattern Loop check box to step through each of the attenuation states. The pause interval can be specified in seconds to adjust the time in between sending each pattern.

Figure 21 ■ Continuous Pattern Loop Settings



Attenuation Value

The Attenuation Value box displays the attenuation value the DSA is currently programmed to. Type the desired attenuation value and then click “Enter” key to program the DSA.

Figure 22 ■ Attenuation Value



Attenuation Slide Bar

The attenuation slide bar in the center of the GUI allows the user to quickly select the desired attenuation. Use the mouse to drag the red rectangle to the desired setting. The red arrows at the top and bottom can be clicked to increase or decrease attenuation state at the minimum step size.

Figure 23 ■ Attenuation Slide Bar



This page intentionally left blank.

Technical Resources



Technical Resources

Additional technical resources are available for download in the Products section at www.psemi.com. These include the Product Specification datasheet, S-parameters, zip file, evaluation kit schematic and bill of materials, material declaration form and PC-compatible software file.

Trademarks are subject to trademark claims.

This page intentionally left blank.