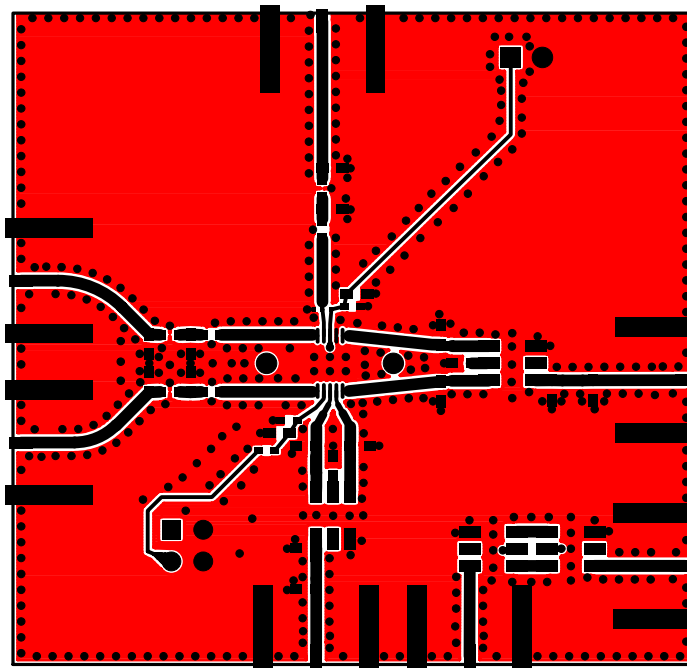


## Peregrine Semiconductor Corporation

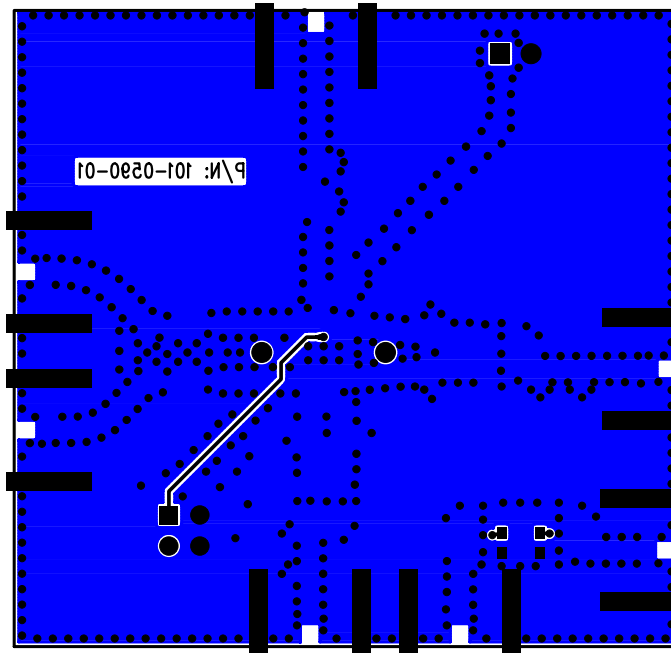
9380 Carroll Park Drive  
PH (858) 731-9400

BOARD NAME:		PE4151 EVK	
PART NUMBER:		101-0590	REV: 01
LAYER NAME:		SALICR (NR (MARMASIDE) DE)	SHEET: 3 of 8
DATE:	1-6-11	SCHEMATIC:	102-0695-01
DESIGNER:		JEFF LUNDY	



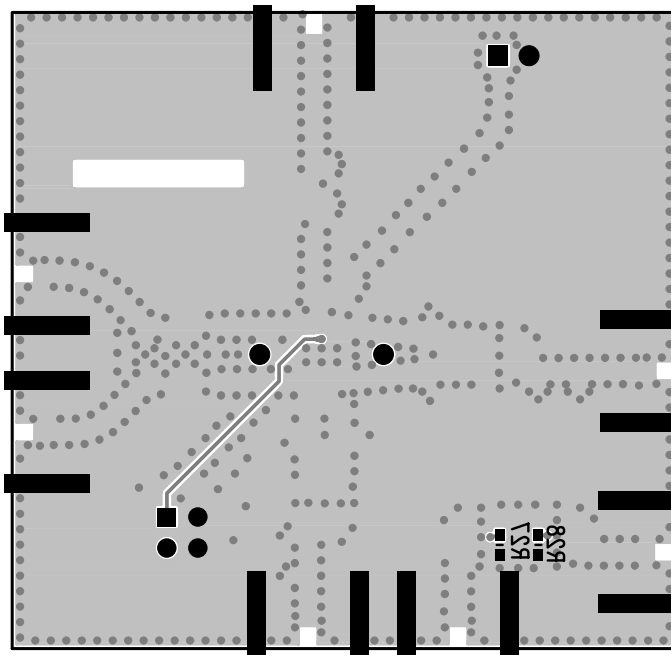
**Peregrine Semiconductor Corporation**  
9380 Carroll Park Drive  
PH (858) 731-9400

BOARD NAME:		PE4151 EVK	
PART NUMBER:		101-0590	REV: 01
LAYER NAME:		LAYER 1 (PRIMARY SIDE)	SHEET: 3 of 8
DATE:	1-6-11	SCHEMATIC:	102-0695-01
DESIGNER:		JEFF LUNDY	



**Peregrine Semiconductor Corporation**  
 9380 Carroll Park Drive  
 PH (858) 731-9400

BOARD NAME:			PE4151 EVK	
PART NUMBER:			101-0590	REV: 01
LAYER NAME:			LAYER 2 (SECONDARY SIDE)	SHEET: 4 of 8
DATE:	1-6-11	SCHEMATIC:	102-0695-01	DESIGNER: JEFF LUNDY



**Peregrine Semiconductor Corporation**

9380 Carroll Park Drive

PH (858) 731-9400

BOARD NAME:

**PE4151 EVK**

PART NUMBER:

**101-0590**

REV:

**01**

LAYER NAME:

**SILKSCREEN (SECONDARY SIDE)**

SHEET:

**6 of 8**

DATE:

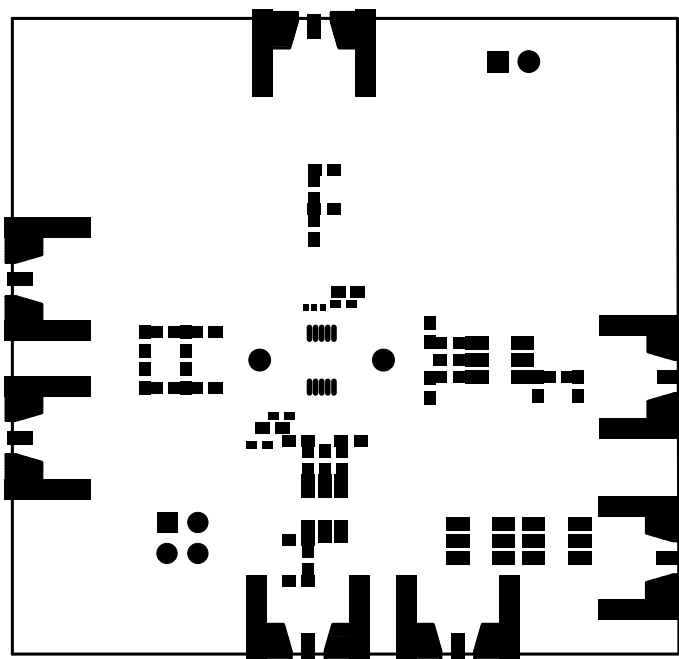
**1-6-11**

SCHEMATIC:

**102-0695-01**

DESIGNER:

**JEFF LUNDY**



**Peregrine Semiconductor Corporation**

9380 Carroll Park Drive

PH (858) 731-9400

BOARD NAME:

**PE4151 EVK**

PART NUMBER:

**101-0590**

REV:

**01**

LAYER NAME:

**SOLDER MASK (PRIMARY SIDE)**

SHEET:

**2 of 8**

DATE:

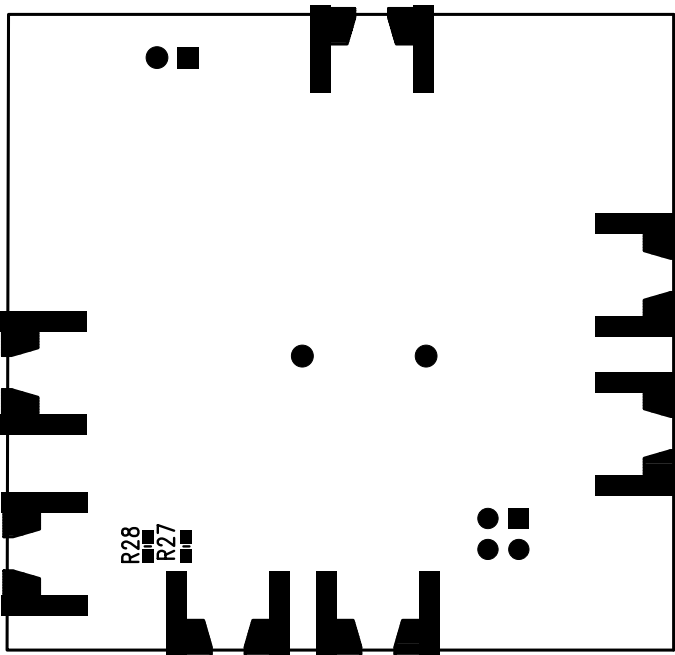
**1-6-11**


SCHEMATIC:

**102-0695-01**

DESIGNER:

**JEFF LUNDY**



<div><p>Peregrine Semiconductor Corporation 9380 Carroll Park Drive PH (858) 731-9400</p></div>			
DATE: 1-6-11		SCHEMATIC: 102-0992-01	
DESIGNER: JEFF LUNDY		SHEET: 2 of 8	
LAYER NAME: SOLDER MASK (SECONDARY SIDE)		PART NUMBER: 101-0590	
REV: 01		BOARD NAME: PE4151 EVK	

4

3

2

FSCM	DWG NO.	SH	REV	
REVISIONS				
ZONE	REV	DESCRIPTION	DATE	APPROVED

LAYOUT DETAIL  
2 LAYER

SILKSCREEN (TOP SIDE)  
SOLDERMASK (TOP SIDE)

LAYER 1 (TOP SIDE)

LAYER 2 (BOTTOM SIDE)

SOLDERMASK (BOTTOM SIDE)  
SILKSCREEN (BOTTOM SIDE)

.059 (CORE)

.062 +/- .005

400mil +/- 1 mil

2055mil

2155mil

SIZE	QTY	SYM	PLATED	TOL
37	6	✕	YES	+/-0.003
10	478	□	YES	+/-0.003
65	2	◇	NO	+/-0.002

16. THIS PCB TO BE ROHS MATERIAL COMPLIANT.

15. ALL TRANSMISSION LINES WITH 37 MIL WIDTH AND 8 MIL GAPS SHALL BE 50 OHMS +/- 5% PCB VENDOR CAN MODIFY TRACE WIDTH AND AIRGAP TO ACHIEVE THIS 50 OHM IMPEDANCE

14. PLATE WITH 8 +/- 2 uIN MINIMUM IMMERSION GOLD OVER 175 +/- 75 uIN MINIMUM ELECTROLESS NICKEL OVER COPPER.

13. ALL PCB'S TO BE ELECTRICALLY TESTED WITH SUPPLIED IPC-D-356A NETLIST (.IPC FILE).

12. SURFACE MOUNT PAD SOLDER PLATING MUST BE FLAT TO A MAXIMUM OF .003" ABOVE BOARD SURFACE.

11. DIMENSIONS AND TOLERANCES PER ANSI Y14.5M.

10. FABRICATE IN ACCORDANCE WITH IPC-6012, TYPE 3, CLASS 2.

9. BOARD SHALL MEET THE REQUIREMENTS OF UL796 WITH A FLAMMABILITY RATING OF 94V-0. VENDOR'S UL LOGO OR DESIGNATION AND DATE SHALL BE LOCATED ON THE BOTTOM SIDE.

8. REMOVE ALL BURRS AND BREAK SHARP EDGES .015 MAX.

7. APPLY SILKSCREEN, AS REQUIRED, USING WHITE EPOXY INK.

6. WARP OR TWIST OF BOARD SHALL NOT EXCEED 10%.

5. APPLY SOLDERMASK (LIQUID PHOTO IMAGEABLE) OVER BARE GOLD. SOLDERMASK TO BE PER IPC-SM-840, CLASS T, COLOR: GREEN. ALL EXPOSED CONDUCTIVE SURFACES TO BE GOLD COATED. APPLY SOLDERMASK TO VIA PADS, BUT RELEASE VIA DRILLS DEFINED AS "VIA" ON DRILL CHART.

4. CONDUCTOR WIDTHS AND SPACING SHALL BE WITHIN +/-10% OF ARTWORK ORIGINALS.

3. ALL HOLES SHALL BE LOCATED WITHIN .003" DIAMETER OF TRUE POSITION. LAYER TO LAYER REGISTRATION SHALL BE WITHIN .003". ALL HOLES SURROUNDED BY LAND SHALL HAVE A MINIMUM ANNULAR RING OF .003.

2. UNLESS OTHERWISE SPECIFIED ALL HOLE DIMENSIONS APPLY AFTER PLATING. ALL PLATED THROUGH HOLES TO HAVE A MINIMUM OF .001" COPPER.

1. MATERIAL: FR-4 COPPER CLAD PLASTIC SHEET PER IPC-4101 TYPE GFN FINISHED COPPER WEIGHT TO BE: 1 OZ. COPPER. LAMINATE USING PRE-PREG MATERIAL PER IPC-4101, TYPE PC-GF. OVERALL BOARD THICKNESS TO BE .062 +/- .005.

NOTES: UNLESS OTHERWISE SPECIFIED

APPLICATION

DO NOT SCALE DRAWING

QTY REQD	FSCM NO.	PART OR IDENTIFYING NO.	NOMENCLATURE OR DESCRIPTION	MATERIAL SPECIFICATION
UNLESS OTHERWISE SPECIFIED ALL DIMENSIONS ARE IN INCHES TOLERANCES ARE: FRACTIONS DECIMALS ANGLES ± .XX .XXX= ±			CONTRACT NO.	COMPANY
MATERIAL			APPROVALS	DATE
FINISH			DRAWN	JEFF LUNDY 1-6-11
NEXT ASSY USED ON			CHECKED	FLEMING LAM 1-6-11
APPLICATION			ISSUED	

PEREGRINE SEMICONDUCTOR CORP.

TITLE

PCB, PE4151 EVK

SIZE FSCM NO. DWG NO. 101-0590

REV. 01

SCALE: NONE SHEET 1 OF 1

4

3

2

1

D

C

B

A