

PE826C31

Product Description

The PE826C31 is a high performance monolithic CMOS RS-422 line driver. Its operating supply range is 3.0 to 3.6 V, with an output signal overvoltage range of 0 – 6 V. The PE826C31 offers higher speed and lower power than other RS-422 driver types. It is packaged in standard DIP and flat pack options and is ideal for stringent military applications.

The PE826C31 is manufactured in Peregrine's patented Ultra Thin Silicon (UTSi®) CMOS process, offering the performance of GaAs with the low power, economy and integration of conventional CMOS.

Quad RS-422 Differential Line Driver

Features

- High-speed operation: < 10 nS typical
- Low power: < 150 uA typical (unloaded)
- 3.3 V operation
- Standard packaging: 16-lead DIP and flat pack
- Pin Compatible with Existing Industry Products

Figure 1. Package Drawing

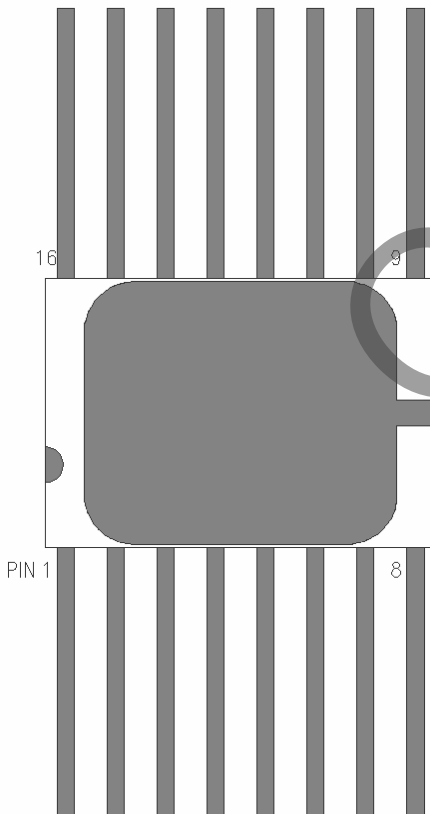


Figure 2. Pin Configuration

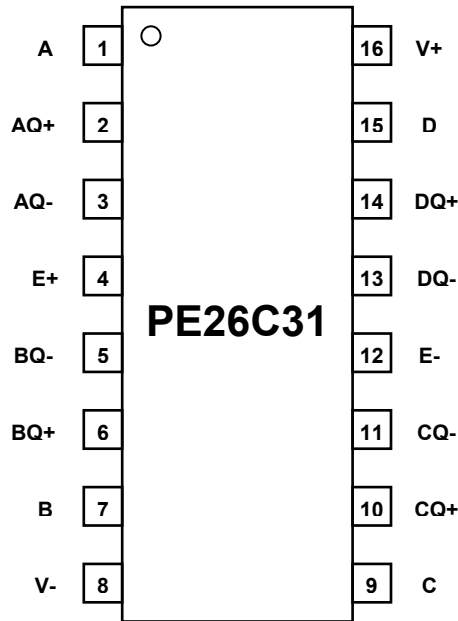


Table 2. Recommended Operating Conditions

Symbol	Parameter/Conditions	Min	Max	Units
V+	Supply voltage	3.0	3.6	V
T _{OP}	Operating temperature range	-55	125	°C
V _{IN}	Maximum input voltage	0	(V+)	V
V _{OUT}	Maximum output voltage	0	(V+)	V
I _{OUT}	Maximum output current	-50	50	mA
V _{ESD}	ESD Voltage Human Body Model (Note 1)		1000	V

Note 1: Periodically tested not 100% sampled. Tested per MIL-STD-883 M3015 C2.

Electrostatic Discharge (ESD) Precautions

When handling this UTSi device, observe the same precautions that you would use with other ESD-sensitive devices. Although this device contains circuitry to protect it from damage due to ESD, precautions should be taken to avoid exceeding the rating specified in Table 2.

Latch-Up Avoidance

Unlike conventional CMOS devices, UTSi CMOS devices are immune to latch-up.

Device Functional Considerations

The PE826C31 operates at high switching speeds. In order to obtain maximum performance, it is crucial that pin 16 be supplied with a bypass capacitor to ground (pin 8).

Table 3. Truth Table

E+	E-	Data	Q+	Q-
L	H	X	Z	Z
H	X	L	L	H
X	L			
H	X	H	H	L
X	L			

Table 1. Pin Descriptions

Pin No.	Pin Name	Description
1	A	Channel A Input
2	AQ+	Channel A Noninverting Output
3	AQ-	Channel A Inverting Output
4	E+	Enable, active high
5	BQ-	Channel B Inverting Output
6	BQ+	Channel B Noninverting Output
7	B	Channel B Input
8	V-	Ground Pin
9	C	Channel C Input
10	CQ+	Channel C Noninverting Output
11	CQ-	Channel C Inverting Output
12	E-	Enable, active low
13	DQ-	Channel D Inverting Output
14	DQ+	Channel D Noninverting Output
15	D	Channel D Input
16	V+	Supply Pin

Table 4. Electrical Specifications

-55° C < Tcase < 125° C, 3.0 V < V+ < 3.6 V

Param	Description	Conditions	Pin(s)	Min	Typ	Max	Units
VD1	Output Differential Voltage	No load	AQ+, AQ-, BQ+, BQ-, CQ+, CQ-, DQ+, DQ-		3.0	3.6	V
VD2	Output Differential Voltage	RL=100 Ω, Fig DC1		1.9	2.3		V
DVD2	Output Differential Voltage Change	IOUT 0 – 20mA, Fig DC1		-0.4	0	0.4	V
VCM	Common Mode Voltage	RL=100 Ω, Fig DC1			1.5	2.0	V
DVCM	Common Mode Voltage Change	RL=100 Ω, Fig DC1		-0.4	0	0.4	V
IOZH	Tristate Output Leakage (H)	VOUT = V+, disabled		-5	-0.1		uA
IOZL	Tristate Output Leakage (L)	VOUT = 0.0 V, disabled			0.1	5	uA
IOSC	Output Short Circuit Current	VOUT = 0.0 V, Enabled Q=H		-30	-70	-150	mA
IOFFH	Output Leakage Current (H)	VOUT=6.0V, V+ and all inputs = 0.0V			1	100	uA
IOFFL	Output Leakage Current (L)	VOUT=-0.25V, V+ and all inputs = 0.0V		-100	-1		uA
VOH	Output High Voltage	Iout=-20mA		2.0	2.4		V
VOL	Output Low Voltage	Iout=20mA			0.1	0.5	V
VIH	Input threshold H	Vdd=3.6V (VIHMIN=0.7*VDD)		A, B, C, D, E+, E-	2.5		
VIL	Input Threshold L	Vdd=3.0V (VILMAX=0.3*VDD)	A, B, C, D, E+, E-			0.9	V
IIH	Input Lkg Current		A, B, C, D, E+, E-	-1		1	uA
IIL	Input Lkg Current		A, B, C, D, E+, E-	-1		1	uA
VIKL	Input Clamp Diode Voltage	IIN=-20 mA	A, B, C, D, E+, E-	-1.5			
VIKH	Input Clamp Diode Voltage	IIN=20 mA	A, B, C, D, E+, E-			(V+) + 1.5 V	
ICC	Supply Current	No load, Inputs = 0 V or V+	V+		120 uA	150 uA	

- Notes:**
- (1) "Line" pins refer to AQ-, AQ+, BQ-, BQ+, CQ-, CQ+, DQ-, DQ+, differential outputs
 - (2) "Digital Input" or "Enable" pins refer to E+, E-
 - (3) "Digital Input" pins refer to A, B, C, D
 - (4) Output Short Circuit not intended to imply continuous operation

Table 5. Electrical Specifications

-55° C < Tcase < 125° C, 3.0 V < V+ < 3.6 V

Param	Description	Conditions	Pin(s)	Min	Typ	Max	Units
TPHL	Prop Delay H-L	RL=100 CL=50 pF	AQ+,	3	9	15	nS
TPLH	Prop Delay H-L		AQ-,	3	9	15	nS
TSK1	Prop Delay Q+/Q-		BQ+,	-3	0	3	nS
TSK2	Prop Delay Skew Ch/Ch		BQ-,	-3	0	3	nS
TRISE	Rise Time 20%/80%		CQ+,		3	10	nS
TFALL	Fall Time 20%/80%		CQ-,		3	10	nS
TPHZ	Prop Delay H-Z		DQ+,		12	20	nS
TPZH	Prop Delay Z-H		DQ-,		12	20	nS
TPLZ	Prop Delay L-Z				10	20	nS
TPZL	Prop Delay Z-L				10	20	nS

Obsolete

Figure 3. TPLH, TPHL Test Circuit Block Diagram

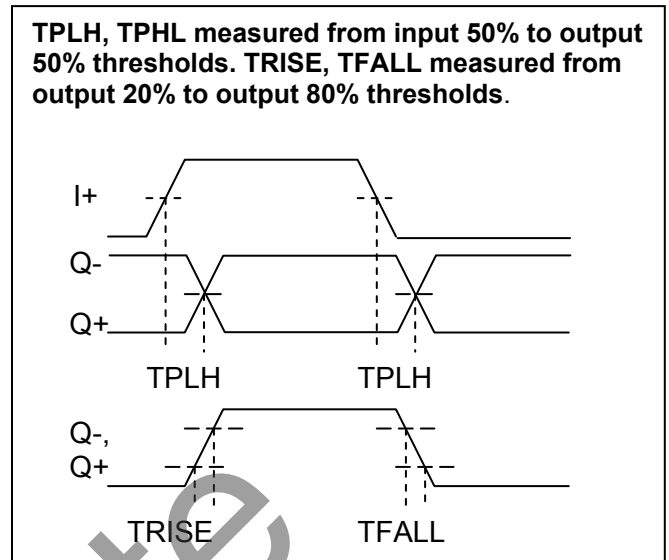
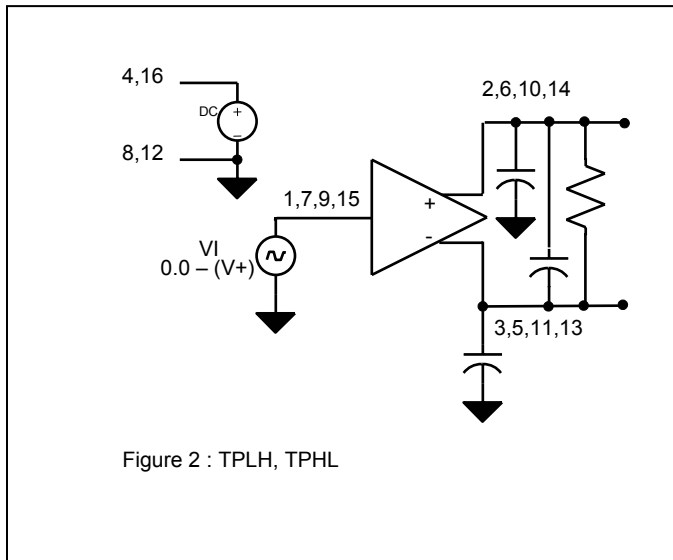


Figure 4. TPLZ, TPZL, TPHZ, TPZH Test Circuit Block Diagram

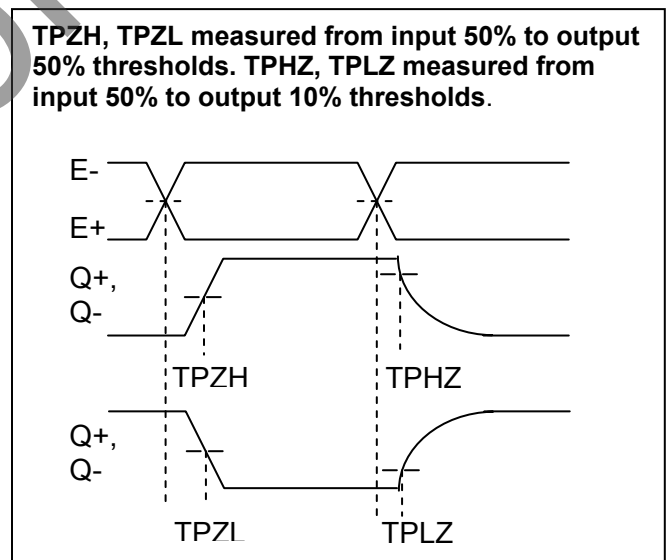
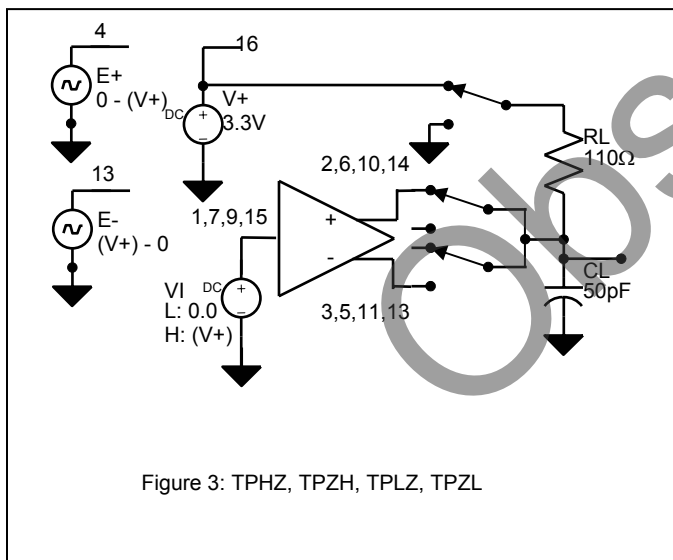


Table 6. Ordering Information

Order Code	Part Marking	Description	Package	Shipping Method
826C31-01	PE826C31-01	Engineering Samples	Die	1/Box
826C31-11	PE826C31-11	Production Unit, DIP	16-pin DIP	25/Tray
826C31-21	PE826C31-21	Production Unit, FP	16-lead FLAT PACK	25/Tray
826C31-00	PE826C31-EK	Evaluation Kit	Evaluation Board	1/Box

Obsolete

Sales Offices

United States

Peregrine Semiconductor Corp.

6175 Nancy Ridge Drive
San Diego, CA 92121
Tel 1-858-455-0660
Fax 1-858-455-0770

Japan

Peregrine Semiconductor K.K.

5A-5, 5F Imperial Tower
1-1-1 Uchisaiwaicho, Chiyoda-ku
Tokyo 100-0011 Japan
Tel 81-3-3502-5211
Fax 81-3-3502-5213

Europe

Peregrine Semiconductor Europe

Aix-En-Provence Office
Parc Club du Golf, bat 9
13856 Aix-En-Provence Cedex 3
France
Tel 33-0-4-4239-3360
Fax 33-0-4-4239-7227

For a list of representatives in your area, please refer to our Web site at: <http://www.peregrine-semi.com>

Data Sheet Identification

Advance Information

The product is in a formative or design stage. The data sheet contains design target specifications for product development. Specifications and features may change in any manner without notice.

The information in this data sheet is believed to be reliable. However, Peregrine assumes no liability for the use of this information. Use shall be entirely at the user's own risk.

No patent rights or licenses to any circuits described in this data sheet are implied or granted to any third party.

Preliminary Specification

The data sheet contains preliminary data. Additional data may be added at a later date. Peregrine reserves the right to change specifications at any time without notice in order to supply the best possible product.

Peregrine Space & Defense products are subject to export restrictions under both EAR (US Dept Of Commerce) and ITAR (US Dept Of State). Contact Peregrine for current export restrictions, if any.

Peregrine's products are not designed or intended for use in devices or systems intended for surgical implant, or in other applications intended to support or sustain life, or in any application in which the failure of the Peregrine product could create a situation in which personal injury or death might occur. Peregrine assumes no liability for damages, including consequential or incidental damages, arising out of the use of its products in such applications.

Product Specification

The data sheet contains final data. In the event Peregrine decides to change the specifications, Peregrine will notify customers of the intended changes by issuing a PCN (Product Change Notice).

Peregrine products are protected under one or more of the following U.S. patents: 6,090,648; 6,057,555; 5,973,382; 5,973,363; 5,930,638; 5,920,233; 5,895,957; 5,883,396; 5,864,162; 5,863,823; 5,861,336; 5,663,570; 5,610,790; 5,600,169; 5,596,205; 5,572,040; 5,492,857; 5,416,043. Other patents are pending.

Peregrine, SEL Safe, the Peregrine logotype, Peregrine Semiconductor Corp. and UTSi are registered trademarks of Peregrine Semiconductor Corp. Copyright © 2003 Peregrine Semiconductor Corp. All rights reserved.